

**LUXURY APARTMENTS WITH POOL FOR SALE**  
**Villa JoLaRa | MIMICE | HR**



Villa JoLaRa | MIMICE | HR





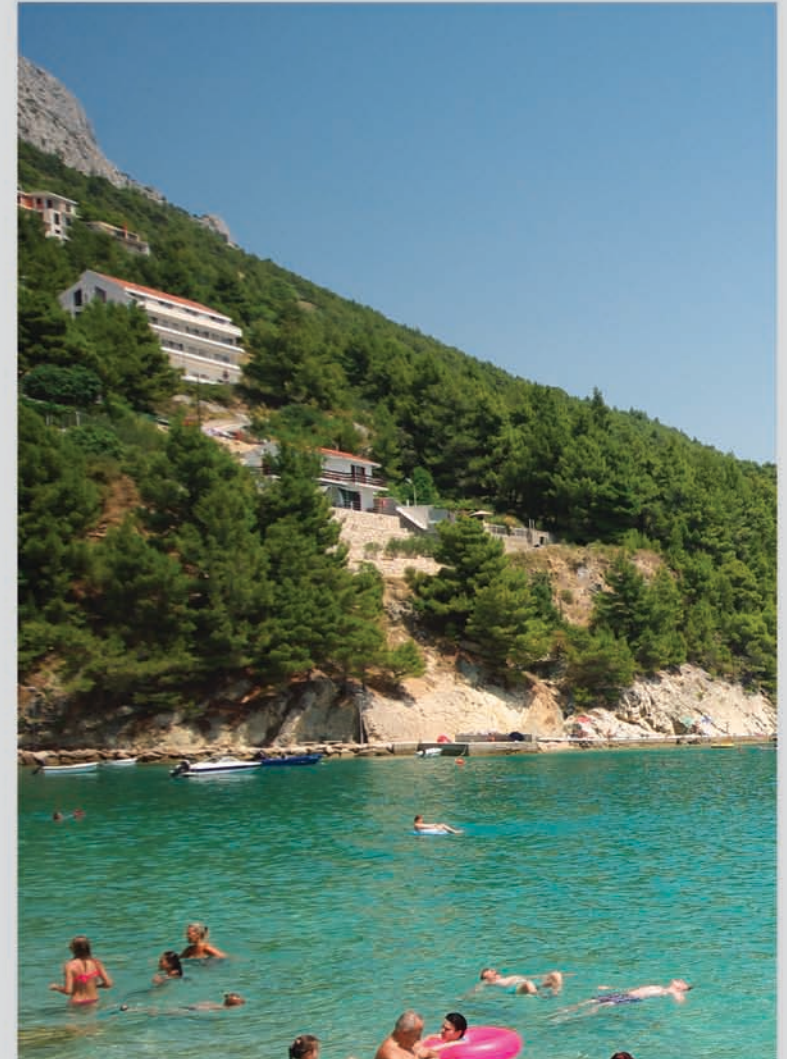
## Villa JoLaRa | MIMICE | HR

In the picturesque village of Mimice between Omiš and Makarska, lies Villa JoLaRa, a luxury Block of Apartments recently constructed with spectacular sea views.

The area, a popular tourist destination for decades, offers a wide range of attractions catering to the most varied of tastes.

You will find beautiful beaches in abundance, from small intimate pebble beaches very close to the Apartments to the long, sandy beaches near Omiš.

Walk Trails on the slopes of the Omiš Dinaric Mountains begin from the very moment you leave the apartment.





Boat excursions are possible to the nearby islands or tours of the historical and natural points of interest on terra ferma.

For the more adventurous, in the vicinity there is a large range of sporting activities such as rafting, canyoning, zip-line, free climbing, windsurfing, paragliding, underwater activities, hiking and mountain biking.

There are several cafes and a restaurant in the village, as well as dozens of eateries and a most varied gastronomical selection is available for the most discerning of tastes.



## Villa JoLaRa | MIMICE | HR

This modern Mediterranean Building is set into the slopes of a mountain only 90 metres from the sea and has been finished with high-quality materials, stone shaped by traditional methods in order to blend the building to the surrounding existing architecture and landscape.

Most areas within Villa JoLaRa offer an unobstructed view of the sea, islands and horizon.



## Villa JoLaRa | MIMICE | HR

Villa JoLaRa comes fully equipped with a wide range of amenities so that you may enjoy the perfect holiday. A luxury lift takes you from the underground garage to a Desso-carpeted hallway on all floors. Villa JoLaRa boasts a swimming pool, fitness room, a cafe with terrace, playground for children, and storage areas.

Villa JoLaRa will also be serviced by a dedicated Concierge during the peak holiday periods.

Villa JoLaRa has been designed as a Category A building in respect of energy efficiency. All installation pipes are insulated with stone wool so as to offer complete insulation from all undesired noise. Floating floors have also been fitted for further noise prevention.





## Villa JoLaRa | MIMICE | HR

**The apartments** have been designed in a contemporary style with particular attention paid to the quality and durability of the materials used.

In order to maximise the breathtaking view enjoyable from every part of the apartments, large openings have been provided to the south together with a large terrace. The fence with greenery is just high enough to allow for an unobstructed view whilst still affording privacy.

All the apartments come equipped with a “smart house” system allowing full control of the air-conditioning, alarm systems and electric blinds.

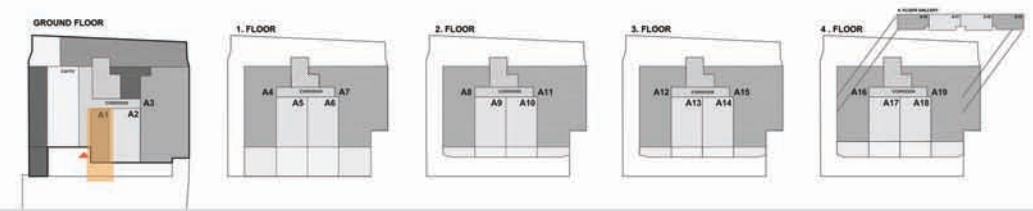
Control of the smart-house system is also possible via your smart phone.

The burglar-proof, fire-resistant doors are equipped with digital locks which are opened using a code or a card that can be reprogrammed whenever necessary.

The floors are tiled by large-format (Imola) porcelain tiles providing a luxury feel, yet being durable and always fresh looking. High-quality, large-format parquet flooring covers the bedrooms. The bathrooms are tiled from floor to ceiling with large porcelain tiles and equipped with Grohe fittings, Geberit units.

A complete outfitting of the apartments is also available (furniture, decorations, etc.) in cooperation with our designers/architects.





## APARTMENT A1 | 28,14 m<sup>2</sup>

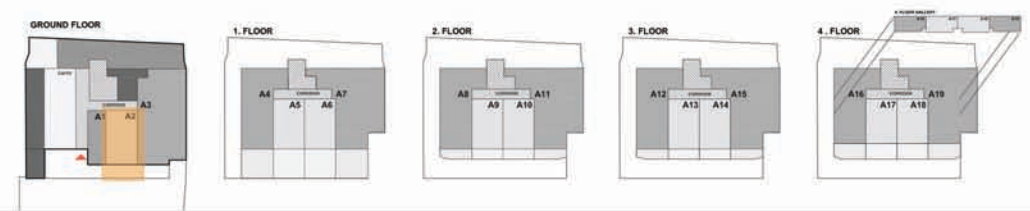
### NET AREA

1. ENTRANCE HALL	3,39 m <sup>2</sup>
2. BATHROOM	3,29 m <sup>2</sup>
3. LIVING ROOM WITH KITCHEN	15,55 m <sup>2</sup>
4. TERRACE	5,91 m <sup>2</sup>

**TOTAL:** 28,14 m<sup>2</sup>







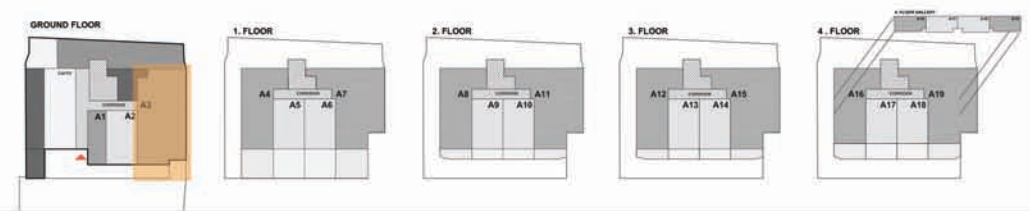
## APARTMENT A2 | 50,69 m<sup>2</sup>

### NET AREA

1. ENTRANCE HALL	4,10 m <sup>2</sup>
2. BATHROOM	5,07 m <sup>2</sup>
3. LIVING ROOM WITH KITCHEN	31,36 m <sup>2</sup>
4. TERRACE	10,16 m <sup>2</sup>

**TOTAL:** 50,69 m<sup>2</sup>





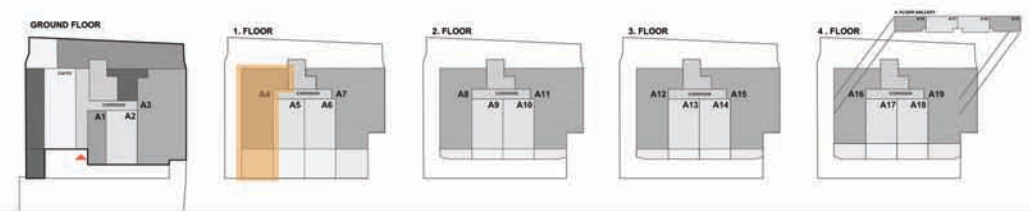
## APARTMENT A3 | 115,69 m<sup>2</sup>

### NET AREA

1. ENTRANCE HALL WITH LIVING ROOM	18,69 m <sup>2</sup>	6. BEDROOM	14,31 m <sup>2</sup>
2. HALL	2,80 m <sup>2</sup>	7. BEDROOM	13,30 m <sup>2</sup>
3. TOILET	1,82 m <sup>2</sup>	8. HALL	4,89 m <sup>2</sup>
4. BATHROOM	4,82 m <sup>2</sup>	9. BATHROOM	6,77 m <sup>2</sup>
5. LIVING ROOM WITH KITCHEN	28,00 m <sup>2</sup>	10. TERRACE	9,92 m <sup>2</sup>
		11. TERRACE	10,37 m <sup>2</sup>
		<b>TOTAL:</b>	<b>115,69 m<sup>2</sup></b>





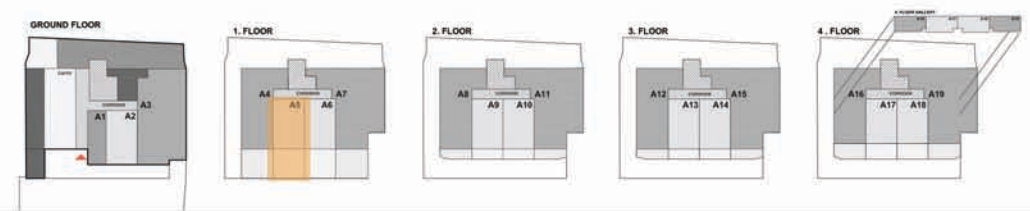


## APARTMENT A4 | 88,46 m<sup>2</sup>

### NET AREA

1. ENTRANCE HALL	1,88 m <sup>2</sup>	5. BEDROOM	16,63 m <sup>2</sup>
2. LIVING ROOM WITH KITCHEN	25,18 m <sup>2</sup>	6. HALL	2,52 m <sup>2</sup>
3. BEDROOM	11,34 m <sup>2</sup>	7. BATHROOM	3,70 m <sup>2</sup>
4. BATHROOM	4,99 m <sup>2</sup>	8. TERRACE	22,22 m <sup>2</sup>
<b>TOTAL:</b>		<b>88,46 m<sup>2</sup></b>	





## APARTMENT A5 | 59,66 m<sup>2</sup>

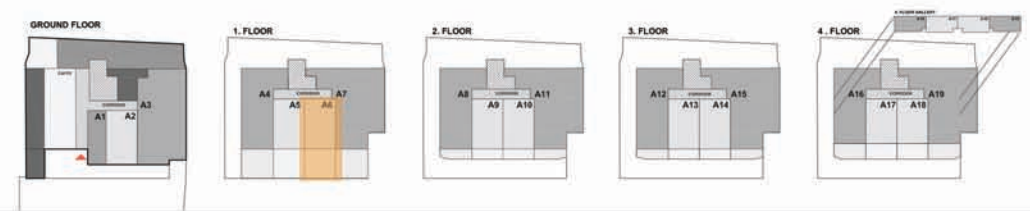
### NET AREA

1. ENTRANCE HALL	3,25 m <sup>2</sup>
2. BATHROOM	5,07 m <sup>2</sup>
3. LIVING ROOM WITH KITCHEN	28,66 m <sup>2</sup>
4. TERRACE	22,68 m <sup>2</sup>

**TOTAL:** 59,66 m<sup>2</sup>







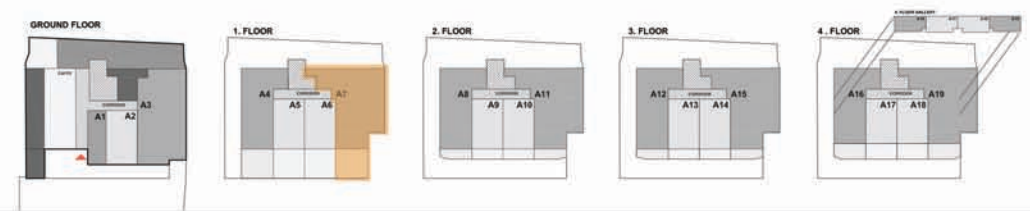
## APARTMENT A6 | 59,66 m<sup>2</sup>

### NET AREA

1. ENTRANCE HALL	3,25 m <sup>2</sup>
2. BATHROOM	5,07 m <sup>2</sup>
3. LIVING ROOM WITH KITCHEN	28,66 m <sup>2</sup>
4. TERRACE	22,68 m <sup>2</sup>

**TOTAL:** 59,66 m<sup>2</sup>





## APARTMENT A7 | 119,16 m<sup>2</sup>

### NET AREA

1. ENTRANCE HALL	4,68 m <sup>2</sup>	5. BATHROOM	5,13 m <sup>2</sup>
2. LIVING ROOM WITH KITCHEN	30,70 m <sup>2</sup>	6. BATHROOM	4,92 m <sup>2</sup>
3. BEDROOM	12,55 m <sup>2</sup>	7. TERRACE	22,60 m <sup>2</sup>
4. BEDROOM	13,80 m <sup>2</sup>	8. TERRACE	24,78 m <sup>2</sup>
TOTAL:		119,16 m <sup>2</sup>	







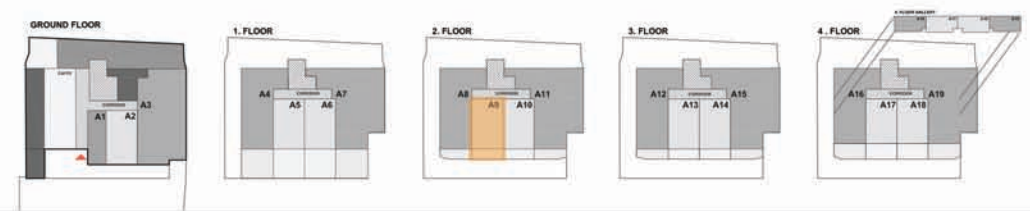
## APARTMENT A8 | 73,56 m<sup>2</sup>

### NET AREA

1. ENTRANCE HALL	4,19 m <sup>2</sup>
2. LIVING ROOM WITH KITCHEN	28,80 m <sup>2</sup>
3. BEDROOM	7,14 m <sup>2</sup>
4. BATHROOM	3,91 m <sup>2</sup>
5. BEDROOM	11,55 m <sup>2</sup>
6. BATHROOM	4,75 m <sup>2</sup>
7. TERRACE	4,83 m <sup>2</sup>
8. TERRACE	8,39 m <sup>2</sup>

**TOTAL:** 73,56 m<sup>2</sup>





## APARTMENT A9 | 43,82 m<sup>2</sup>

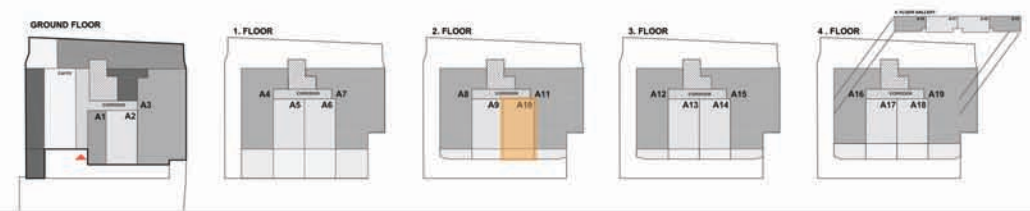
### NET AREA

1. ENTRANCE HALL	3,25 m <sup>2</sup>
2. BATHROOM	5,07 m <sup>2</sup>
3. LIVING ROOM WITH KITCHEN	26,93 m <sup>2</sup>
4. TERRACE	8,57 m <sup>2</sup>

**TOTAL: 43,82 m<sup>2</sup>**







## APARTMENT A10 | 43,82 m<sup>2</sup>

### NET AREA

1. ENTRANCE HALL	3,25 m <sup>2</sup>
2. BATHROOM	5,07 m <sup>2</sup>
3. LIVING ROOM WITH KITCHEN	26,93 m <sup>2</sup>
4. TERRACE	8,57 m <sup>2</sup>

**TOTAL:** 43,82 m<sup>2</sup>



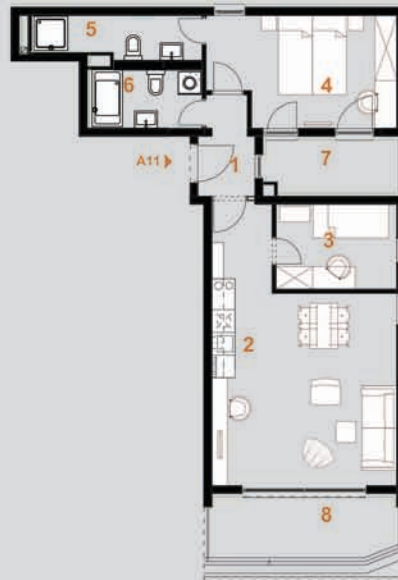


## APARTMENT A11 | 76,81 m<sup>2</sup>

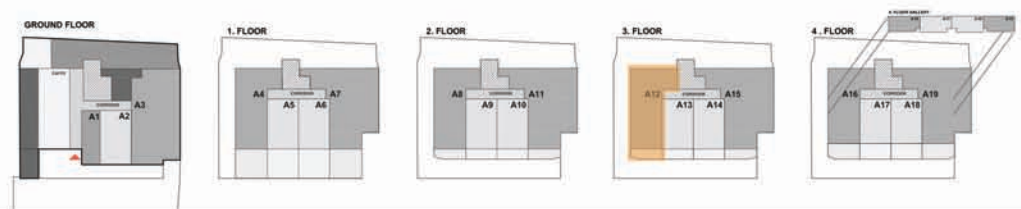
### NET AREA

1. ENTRANCE HALL	3,60 m <sup>2</sup>
2. LIVING ROOM WITH KITCHEN	28,86 m <sup>2</sup>
3. BEDROOM	7,19 m <sup>2</sup>
4. BEDROOM	13,95 m <sup>2</sup>
5. BATHROOM	4,91 m <sup>2</sup>
6. BATHROOM	4,61 m <sup>2</sup>
7. TERRACE	5,30 m <sup>2</sup>
8. TERRACE	8,39 m <sup>2</sup>

TOTAL: 76,81 m<sup>2</sup>







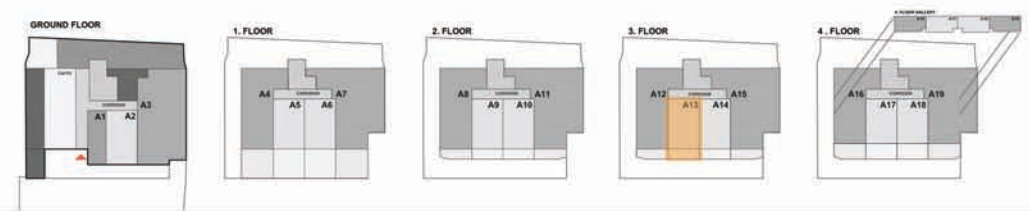
## APARTMENT A12 | 73,56 m2

### NET AREA

1. ENTRANCE HALL	4,19 m2
2. LIVING ROOM WITH KITCHEN	28,80 m2
3. BEDROOM	7,14 m2
4. BATHROOM	3,91 m2
5. BEDROOM	11,55 m2
6. BATHROOM	4,75 m2
7. TERRACE	4,83 m2
8. TERRACE	8,39 m2

**TOTAL:** 73,56 m2





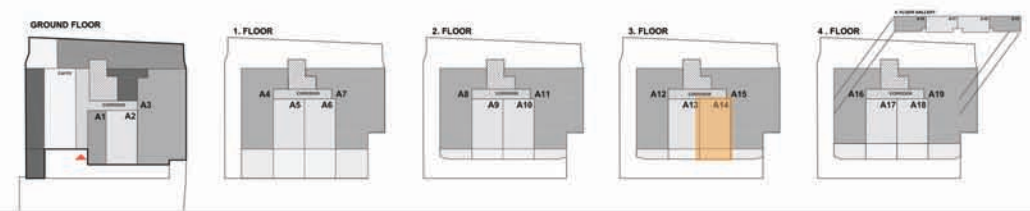
## APARTMENT A13 | 43,82 m<sup>2</sup>

### NET AREA

1. ENTRANCE HALL	3,25 m <sup>2</sup>
2. BATHROOM	5,07 m <sup>2</sup>
3. LIVING ROOM WITH KITCHEN	26,93 m <sup>2</sup>
4. TERRACE	8,57 m <sup>2</sup>

**TOTAL: 43,82 m<sup>2</sup>**





## APARTMENT A14 | 43,82 m<sup>2</sup>

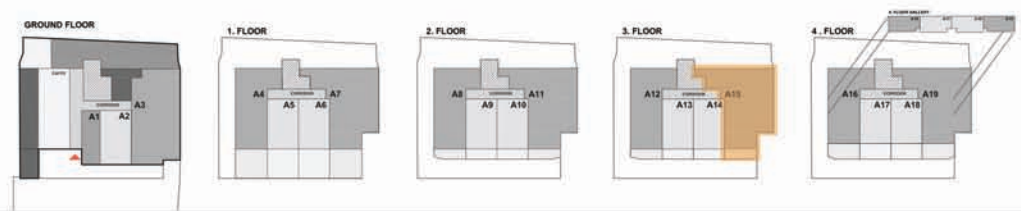
### NET AREA

1. ENTRANCE HALL	3,25 m <sup>2</sup>
2. BATHROOM	5,07 m <sup>2</sup>
3. LIVING ROOM WITH KITCHEN	26,93 m <sup>2</sup>
4. TERRACE	8,57 m <sup>2</sup>

**TOTAL:** 43,82 m<sup>2</sup>





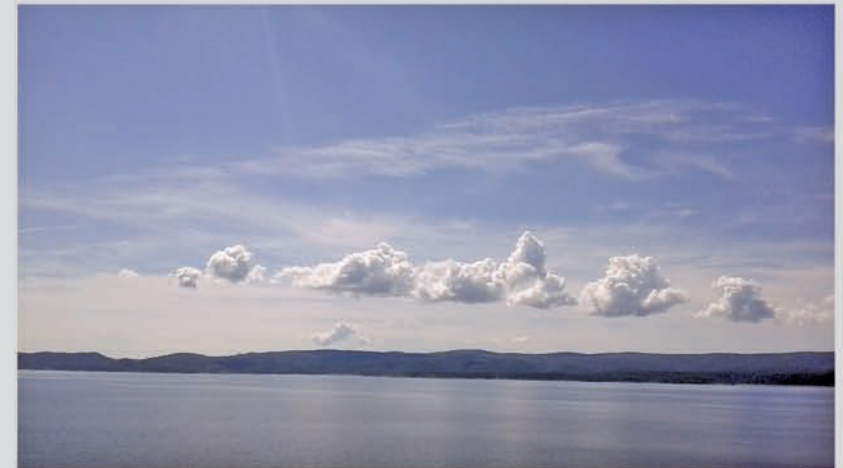
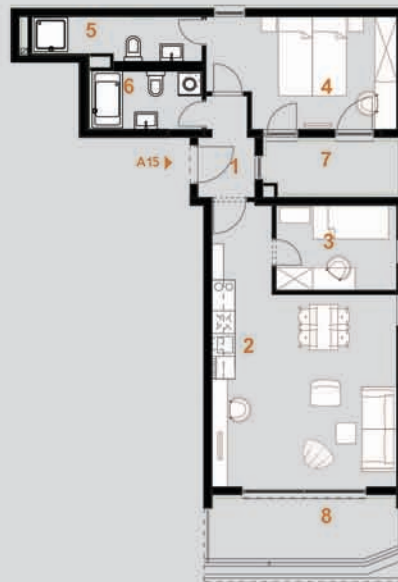


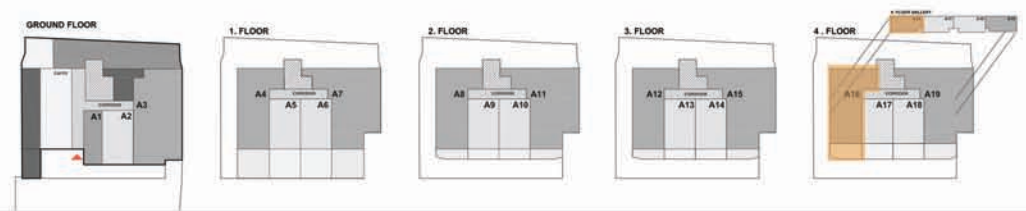
## APARTMENT A15 | 76,81 m<sup>2</sup>

### NET AREA

1. ENTRANCE HALL	3,60 m <sup>2</sup>
2. LIVING ROOM WITH KITCHEN	28,86 m <sup>2</sup>
3. BEDROOM	7,19 m <sup>2</sup>
4. BEDROOM	13,95 m <sup>2</sup>
5. BATHROOM	4,91 m <sup>2</sup>
6. BATHROOM	4,61 m <sup>2</sup>
7. TERRACE	5,30 m <sup>2</sup>
8. TERRACE	8,39 m <sup>2</sup>

**TOTAL:** 76,81 m<sup>2</sup>





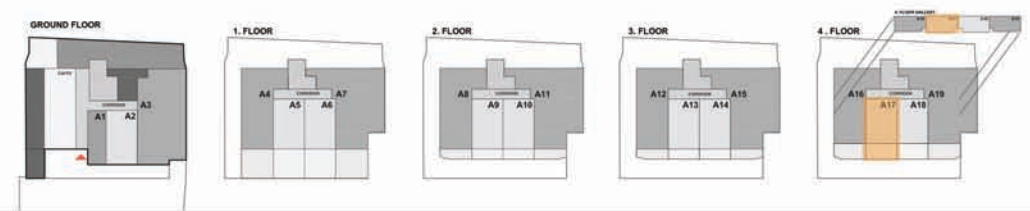
## APARTMENT A16 | 84,16 m<sup>2</sup>

### NET AREA

1. ENTRANCE HALL	5,82 m <sup>2</sup>
2. LIVING ROOM WITH KITCHEN	24,88 m <sup>2</sup>
3. BATHROOM	5,11 m <sup>2</sup>
4. BEDROOM	16,37 m <sup>2</sup>
5. BATHROOM	4,70 m <sup>2</sup>
6. LOFT GALLERY	11,03 m <sup>2</sup>
7. TERRACE	4,83 m <sup>2</sup>
8. TERRACE	11,42 m <sup>2</sup>

TOTAL: 84,16 m<sup>2</sup>





## APARTMENT A17 | 53,60 m2

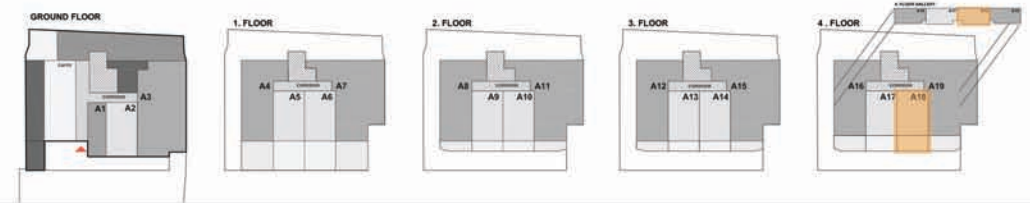
### NET AREA

1. ENTRANCE HALL	3,30 m2
2. BATHROOM	5,08 m2
3. LIVING ROOM WITH KITCHEN	23,75 m2
4. LOFT GALLERY	10,10 m2
5. TERRACE	11,37 m2

**TOTAL:** 53,60 m2





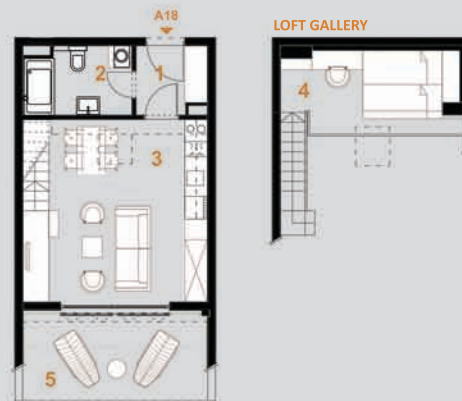


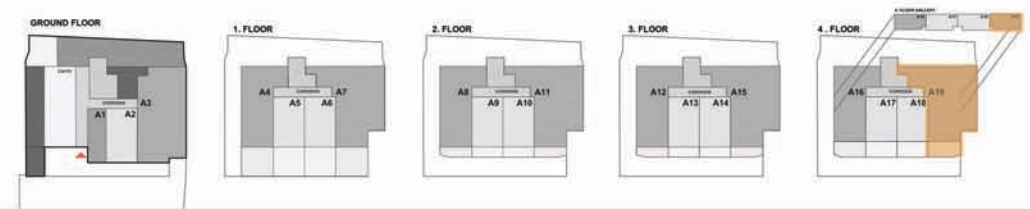
## APARTMENT A18 | 53,60 m2

### NET AREA

1. ENTRANCE HALL	3,30 m2
2. BATHROOM	5,08 m2
3. LIVING ROOM WITH KITCHEN	23,75 m2
4. LOFT GALLERY	10,10 m2
5. TERRACE	11,37 m2

**TOTAL: 53,60 m2**





## APARTMENT A19 | 85,02 m<sup>2</sup>

### NET AREA

1. ENTRANCE HALL	5,87 m <sup>2</sup>
2. LIVING ROOM WITH KITCHEN	24,88 m <sup>2</sup>
3. BATHROOM	5,11 m <sup>2</sup>
4. BEDROOM	16,32 m <sup>2</sup>
5. BATHROOM	5,09 m <sup>2</sup>
6. LOFT GALLERY	11,03 m <sup>2</sup>
7. TERRACE	5,30 m <sup>2</sup>
8. TERRACE	11,42 m <sup>2</sup>

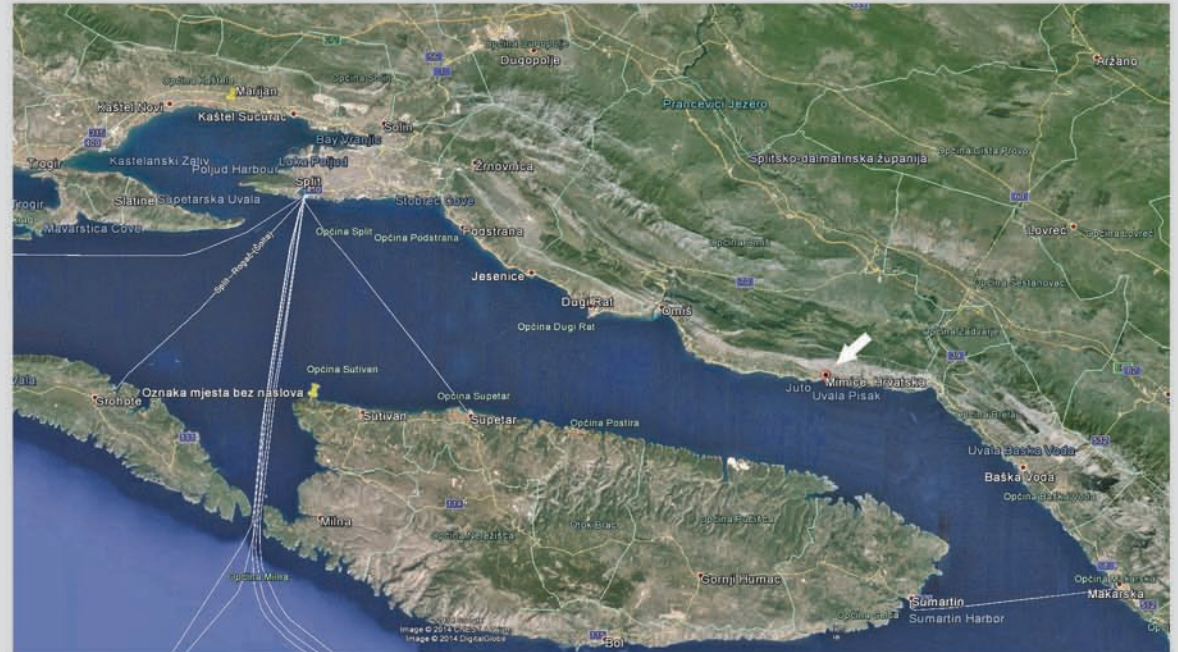
TOTAL: 85,02 m<sup>2</sup>





## Villa JoLaRa | MIMICE | HR

- distance to nearest beach 90 metres
- distance to centre of Mimice 500 metres
- distance to the town of Omiš 12 kilometres
- distance to the town of Makarska 25 kilometres
- distance to the city of Split 37 kilometres
- distance to the motorway 19 kilometres
- distance to the airport 52 kilometres





## Villa JoLaRa | MIMICE | HR

A project of Anglo Dalmatia Developments LTD (UK)

